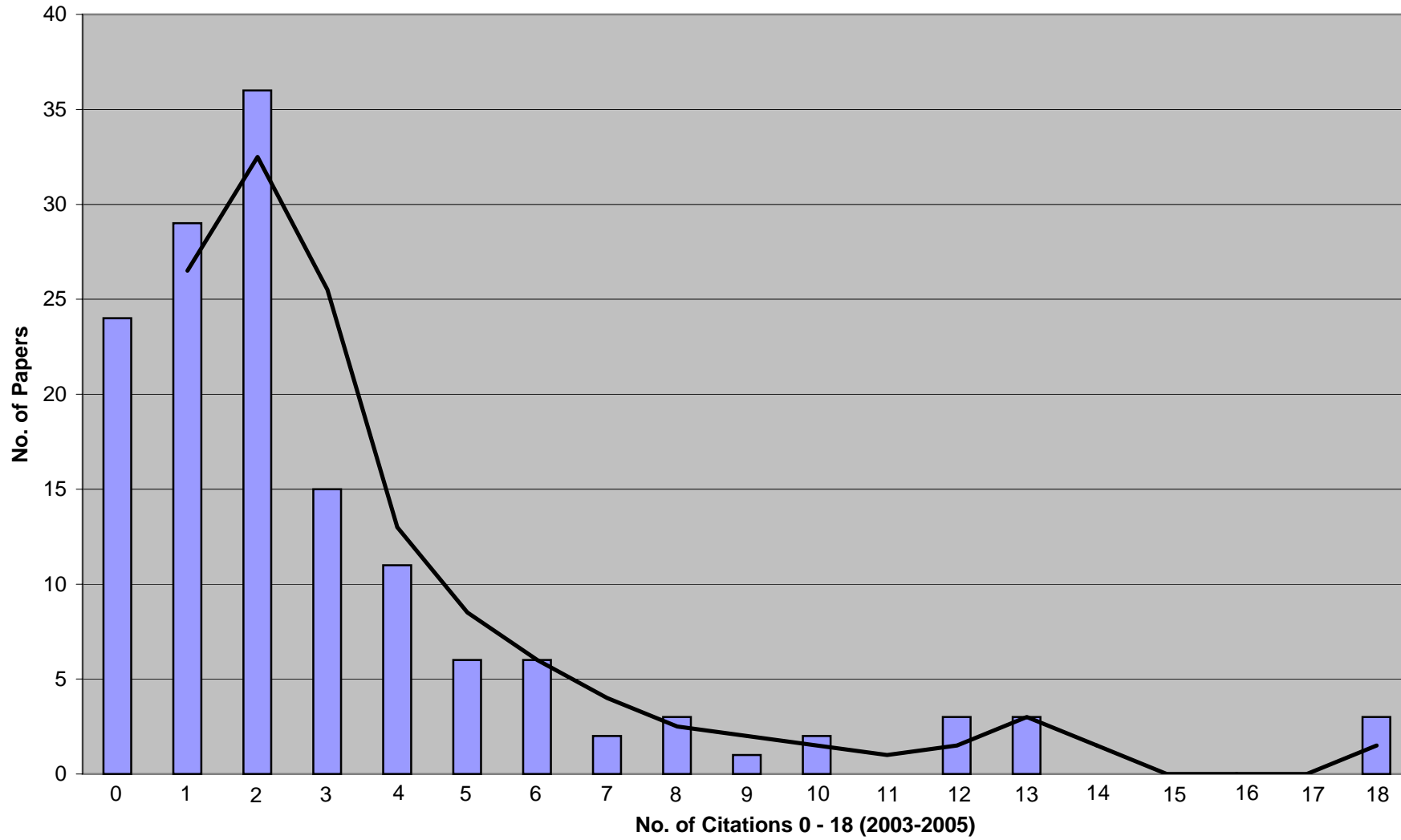


Areas	Genetic Epi	Twin Research/ Stat.Genet Methodologies	Behaviour Genetics	Obstetrics and Paediatrics	Twining and being a twin	Molecular Genetics	Twin Registries	Abstracts	News, Views	TOTAL
No. of 03 - 04 papers (144)	37	28	30	23	17	3	3	2	1	144
No. of citations (2003-2005)	153	105	108	47	30	4	5	0	0	452
Average citations per paper	4.1	3.8	3.6	2.0	1.8	1.3	1.7	0.0	0.0	3.1

Average citations per paper	3.1
-----------------------------	-----

Average citations per open access paper	5.3
---	-----

### Frequency of Citations



Authors	Paper	Published	Citatns	Open Access	Area
1. Zhu G, Evans DM, Duffy DL, et al.	A genome scan for eye color in 502 twin families: Most variation is due to a QTL on chromosome 15q	TWIN RESEARCH 7 (2): 197-210 APR 2004	18	Open Access	Genetic Epidemiology
2. Schousboe K, Willemsen G, Kyvik	Sex differences in heritability of BMI: A comparative study of results from twin studies in eight countries	TWIN RESEARCH 6 (5): 409-421 OCT 2003	18	Open Access	Genetic Epidemiology
3. Christiansen L, Frederiksen H,	Age- and sex-differences in the validity of questionnaire-based zygosity in twins	TWIN RESEARCH 6 (4): 275-278 AUG 2003	18		Twin Research/ Stat,Genet Methodologies
4. Silventoinen K, Sammalisto S, Perola	Heritability of adult body height: A comparative study of twin cohorts in eight countries	TWIN RESEARCH 6 (5): 399-408 OCT 2003	13	Open Access	Genetic Epidemiology
5. Skyttthe A, Pedersen NL, Kaprio	Longevity studies in GenomEUtwin	TWIN RESEARCH 6 (5): 448-454 OCT 2003	13	Open Access	Twin Research/ Stat,Genet Methodologies
6. Koeppen-Schomerus G,	Twins and non-twin siblings: Different estimates of shared environmental influence in early childhood	TWIN RESEARCH 6 (2): 97-105 APR 2003	13		Beh Gen
7. Evans A, van Baal GCM, McCarron	The genetics of coronary heart disease: The contribution of twin studies	TWIN RESEARCH 6 (5): 432-441 OCT 2003	12	Open Access	Genetic Epidemiology
8. Pulkkinen L, Vaalamo I, Hietala R,	Peer reports of adaptive behavior in twins and singletons: Is twinship a risk or an advantage?	TWIN RESEARCH 6 (2): 106-118 APR 2003	12		Twinning and being a twin
9. Posthuma D, Baare WFC, Pol	Genetic correlations between brain volumes and the WAIS-III dimensions of verbal comprehension, working memory, perceptual organization, and processing speed	TWIN RESEARCH 6 (2): 131-139 APR 2003	12	Open Access	Beh Gen
10. Peltonen L	GenomEUtwin: A strategy to identify genetic influences on health and disease	TWIN RESEARCH 6 (5): 354-360 OCT 2003	10	Open Access	Twin Research/ Stat,Genet Methodologies
11. Mulder EJ, van Baal C, Gaistz D, et	Genetic and environmental influences on migraine: A twin study across six countries	TWIN RESEARCH 6 (5): 422-431 OCT 2003	10	Open Access	Genetic Epidemiology
12. Madden PAF, Pedersen NL, Kaprio	The epidemiology and genetics of smoking initiation and persistence: Crosscultural comparisons of twin study results	TWIN RESEARCH 7 (1): 82-97 FEB 2004	9		Beh Gen
13. Ooki S, Asaka A	Zygosity diagnosis in young twins by questionnaire for twins' mothers and twins' self-reports	TWIN RESEARCH 7 (1): 5-12 FEB 2004	8		Twin Research/ Stat,Genet Methodologies
14. Blickstein I, Kalish RB	Birthweight discordance in multiple pregnancy	TWIN RESEARCH 6 (6): 526-531 DEC 2003	8		Obstetrics and Paediatrics
15. Catt J, Wood T, Henman M, et al.	Single embryo transfer in IVF to prevent multiple pregnancies	TWIN RESEARCH 6 (6): 536-539 DEC 2003	8		Obstetrics and Paediatrics

Authors	Paper	Published	Citatns	Open Access	Area
16. Fellman J, Eriksson AW	Temporal differences in the regional twinning rates in Sweden after 1750	TWIN RESEARCH 6 (3): 183-191 JUN 2003	7		Twinning and being a twin
17. de Lange M, Snieder H, Ariens	The relation between insulin resistance and hemostasis: Pleiotropic genes and common environment	TWIN RESEARCH 6 (2): 152-161 APR 2003	7		Genetic Epidemiology
18. Hestbaek L, Iachine IA, Leboeuf-	Heredity of low back pain in a young population: A classical twin study	TWIN RESEARCH 7 (1): 16-26 FEB 2004	6		Genetic Epidemiology
19. Neale BM, Mazzeo SE, Bulik CM	A twin study of dietary restraint, disinhibition and hunger: An examination of the eating inventory (three factor eating questionnaire)	TWIN RESEARCH 6 (6): 471-478 DEC 2003	6		Genetic Epidemiology
20. Vink JM, Willemsen G, Engels	Smoking status of parents, siblings and friends: Predictors of regular smoking? Findings from a longitudinal twin-family study	TWIN RESEARCH 6 (3): 209-217 JUN 2003	6	Open Access	Beh Gen
21. Medland SE, Wright MJ, Geffen	Special twin environments, genetic influences and their effects on the handedness of twins and their siblings	TWIN RESEARCH 6 (2): 119-130 APR 2003	6		Twinning and being a twin
22. Derom C, Derom R, Loos RJF,	Retrospective determination of chorion type in twins using a simple questionnaire	TWIN RESEARCH 6 (1): 19-21 FEB 2003	6		Twin Research/ Stat,Genet Methodologies
23. Heath AC, Nyholt DR, Neuman	Zygoty diagnosis in the absence of genotypic data: An approach using latent class analysis	TWIN RESEARCH 6 (1): 22-26 FEB 2003	6		Twin Research/ Stat,Genet Methodologies
24. Cherkas LF, Oelsner EC, Mak YT,	Genetic influences on female infidelity and number of sexual partners in humans: A linkage and association study of the role of the vasopressin receptor gene (AVPR1A)	TWIN RESEARCH 7 (6): 649-658 DEC 2004	5		Beh Gen
25. Loat CS, Asbury K, Galsworthy MJ, et	X inactivation as a source of behavioural differences in monozygotic female twins	TWIN RESEARCH 7 (1): 54-61 FEB 2004	5		Beh Gen
26. Luciano M, Wright MJ, Martin NG	Exploring the etiology of the association between birthweight and IQ in an adolescent twin sample	TWIN RESEARCH 7 (1): 62-71 FEB 2004	5		Beh Gen
27. Morley R, Dwyer T, Carlin JB	Studies of twins: Can they shed light on the fetal origins of adult disease hypothesis?	TWIN RESEARCH 6 (6): 520-525 DEC 2003	5		Twin Research/ Stat,Genet Methodologies
28. Tuya C, Mutch WJ, Broom I, et al.	Size at birth, fasting glucose and insulin levels and insulin resistance in adult twins	TWIN RESEARCH 6 (4): 302-306 AUG 2003	5		Genetic Epidemiology
29. Rooney R, Hay D, Levy F	Small for gestational age as a predictor of behavioral and learning problems in twins	TWIN RESEARCH 6 (1): 46-54 FEB 2003	5		Beh Gen
30. Vierikko E, Pulkkinen L, Kaprio J,	Genetic and environmental influences on the relationship between aggression and hyperactivity-impulsivity as rated by teachers and parents	TWIN RESEARCH 7 (3): 261-274 JUN 2004	4	Open Access	Beh Gen

Authors	Paper	Published	Citatns	Open Access	Area
31. Tiu RD, Wadsworth SJ, Olson	Causal models of reading disability: A twin study	TWIN RESEARCH 7 (3): 275-283 JUN 2004	4		Genetic Epidemiology
32. Medland SE	Alternate parameterization for scalar and non-scalar sex-limitation models in Mx	TWIN RESEARCH 7 (3): 299-305 JUN 2004	4		Twin Research/ Stat,Genet Methodologies
33. Tully LA, Moffitt TE, Caspi A, et al.	What effect does classroom separation have on twins' behavior, progress at school, and reading abilities?	TWIN RESEARCH 7 (2): 115-124 APR 2004	4		Twinning and being a twin
34. Locatelli I, Lichtenstein P,	The heritability of breast cancer: A Bayesian correlated frailty model applied to Swedish twins data	TWIN RESEARCH 7 (2): 182-191 APR 2004	4		Genetic Epidemiology
35. Heijmans BT, Beem AL, Willemssen	Further evidence for a QTL influencing body mass index on chromosome 7p from a genome-wide scan in Dutch families	TWIN RESEARCH 7 (2): 192-196 APR 2004	4	Open Access	Genetic Epidemiology
36. Eaves L, Foley D, Silberg J	Has the "equal environments" assumption been tested in twin studies?	TWIN RESEARCH 6 (6): 486-489 DEC 2003	4		Twin Research/ Stat,Genet Methodologies
37. Page WF, Hoaglund FT,	Primary osteoarthritis of the hip in monozygotic and dizygotic male twins	TWIN RESEARCH 6 (2): 147-151 APR 2003	4		Genetic Epidemiology
38. Imaizumi Y	Perinatal mortality in triplet births in Japan: Time trends and factors influencing mortality	TWIN RESEARCH 6 (1): 1-6 FEB 2003	4		Obstetrics and Paediatrics
39. Jacquemyn Y, Martens G,	A matched cohort comparison of the outcome of twin versus singleton pregnancies in Flanders, Belgium	TWIN RESEARCH 6 (1): 7-11 FEB 2003	4		Obstetrics and Paediatrics
40. Leonard LG	Breastfeeding rights of multiple birth families and guidelines for health professionals	TWIN RESEARCH 6 (1): 34-45 FEB 2003	4		Obstetrics and Paediatrics
41. Derks EM, Dolan CV, Boomsma	Effects of censoring on parameter estimates and power in genetic modeling	TWIN RESEARCH 7 (6): 659-669 DEC 2004	3	Open Access	Twin Research/ Stat,Genet Methodologies
42. Ooki S, Yokoyama Y, Asaka	Zygosity misclassification of twins at birth in Japan	TWIN RESEARCH 7 (3): 228-232 JUN 2004	3		Twin Research/ Stat,Genet Methodologies
43. Johnson AM, Vernon PA, Harris	A behavior genetic investigation of the relationship between leadership and personality	TWIN RESEARCH 7 (1): 27-32 FEB 2004	3		Beh Gen
44. Thorpe K	Twins and friendship	TWIN RESEARCH 6 (6): 532-535 DEC 2003	3		Twinning and being a twin
45. Heath AC, Knopik VS, Madden	Accuracy of mothers' retrospective reports of smoking during pregnancy: Comparison with twin sister informant ratings	TWIN RESEARCH 6 (4): 297-301 AUG 2003	3		Beh Gen

Authors	Paper	Published	Citatns	Open Access	Area
46. Boomsma DI, Prinsen HM, Frants	Genetic analysis of indicators of cholesterol synthesis and absorption: Lathosterol and phytosterols in Dutch twins and their parents	TWIN RESEARCH 6 (4): 307-314 AUG 2003	3	Open Access	Genetic Epidemiology
47. Zhu G, Duffy DL, Turner DR, et al.	Linkage and association analysis of radiation damage repair genes XRCC3 and XRCC5 with-nevus density in adolescent twins	TWIN RESEARCH 6 (4): 315-321 AUG 2003	3		Genetic Epidemiology
48. Akerman BA, Suurvee E	The cognitive and identity development of twins at 16 years of age: A follow-up study of 32 twin pairs	TWIN RESEARCH 6 (4): 328-333 AUG 2003	3		Twinning and being a twin
49. Larsson M, Pedersen NL, Stattin	Importance of genetic effects for characteristics of the human iris	TWIN RESEARCH 6 (3): 192-200 JUN 2003	3		Genetic Epidemiology
50. Reed T, Dick DM	Heritability and validity of healthy physical aging (wellness) in elderly male twins	TWIN RESEARCH 6 (3): 227-234 JUN 2003	3		Genetic Epidemiology
51. Neale MC	A finite mixture distribution model for data collected from twins	TWIN RESEARCH 6 (3): 235-239 JUN 2003	3		Twin Research/ Stat,Genet Methodologies
52. Newton R, Casabonne D,	A case-control study of vanishing twin as a risk factor for cerebral palsy	TWIN RESEARCH 6 (2): 83-84 APR 2003	3		Genetic Epidemiology
53. Reich W, Todd RD, Joyner CA, et al.	Reliability and stability of mothers' reports about their pregnancies with twins	TWIN RESEARCH 6 (2): 85-88 APR 2003	3		Obstetrics and Paediatrics
54. Kirk KM, Doege KJ, Hecht J, et al.	Osteoarthritis of the hands, hips and knees in an Australian twin sample - Evidence of association with the aggrecan VNTR polymorphism	TWIN RESEARCH 6 (1): 62-66 FEB 2003	3		Genetic Epidemiology
55. Sumathipala A, Siribaddana SH,	Challenges in recruiting older twins for the Sri Lankan Twin Registry	TWIN RESEARCH 6 (1): 67-71 FEB 2003	3		Twin Registries
56. Hoekstra C, Meijer P, Kluff C, et	Genetics of dizygotic twinning: A feasibility study for a biobank	TWIN RESEARCH 7 (6): 556-563 DEC 2004	2	Open Access	Twinning and being a twin
57. Spijker S, van de Leemput JCH,	Profiling gene expression in whole blood samples following an in-vitro challenge	TWIN RESEARCH 7 (6): 564-570 DEC 2004	2	Open Access	Mol Genetics
58. Desai AV, Cherkas LF, Spector	Genetic influences in self-reported symptoms of obstructive sleep apnoea and restless legs: A twin study	TWIN RESEARCH 7 (6): 589-595 DEC 2004	2		Genetic Epidemiology
59. Huygens W, Thomis MA, Peeters	A quantitative trait locus on 13q14.2 for trunk strength	TWIN RESEARCH 7 (6): 603-606 DEC 2004	2		Genetic Epidemiology
60. Fellman J, Eriksson AW	Association between the rates of multiple maternities	TWIN RESEARCH 7 (5): 387-397 OCT 2004	2		Twin Research/ Stat,Genet Methodologies

Authors	Paper	Published	Citatns	Open Access	Area
61. Swan GE, Benowitz NL, Jacob	Pharmacogenetics of nicotine metabolism in twins: Methods and procedures	TWIN RESEARCH 7 (5): 435-448 OCT 2004	2		Beh Gen
62. Heiman N, Stallings MC, Young	Investigating the genetic and environmental structure of Cloninger's personality dimensions in adolescence	TWIN RESEARCH 7 (5): 462-470 OCT 2004	2		Beh Gen
63. Eaves L, Silberg J, Foley D, et al.	Genetic and environmental influences on the relative timing of pubertal change	TWIN RESEARCH 7 (5): 471-481 OCT 2004	2		Genetic Epidemiology
64. Leviel K, Olarte M, Sullivan PF	Genotyping accuracy for whole-genome amplification of DNA from buccal epithelial cells	TWIN RESEARCH 7 (5): 482-484 OCT 2004	2		Mol Genetics
65. Taylor A	The consequences of selective participation on behavioral-genetic findings: Evidence from simulated and real data	TWIN RESEARCH 7 (5): 485-504 OCT 2004	2		Beh Gen
66. Kuwata T, Matsubara S,	The risk of birth defects in dichorionic twins conceived by assisted reproductive technology	TWIN RESEARCH 7 (3): 223-227 JUN 2004	2		Obstetrics and Paediatrics
67. Kvestad E, Kvaerner KJ,	Otitis media: Genetic factors and sex differences	TWIN RESEARCH 7 (3): 239-244 JUN 2004	2		Genetic Epidemiology
68. Zeegers MPA, Rijdsdijk F, Sham P, et	The contribution of risk factors to blood pressure heritability estimates in young adults: The east Flanders prospective twin study	TWIN RESEARCH 7 (3): 245-253 JUN 2004	2		Genetic Epidemiology
69. Lubke GH, Dolan CV, Neale MC	Implications of absence of measurement invariance for detecting sex limitation and genotype by environment interaction	TWIN RESEARCH 7 (3): 292-298 JUN 2004	2		Twin Research/ Stat,Genet Methodologies
70. Hansen J, Alessandri PT, Croft	The western Australian register of childhood multiples: Effects of questionnaire design and follow-up protocol on response rates and representativeness	TWIN RESEARCH 7 (2): 149-161 APR 2004	2		Twin Registries
71. Bartels M, Boomsma DI,	Disentangling genetic, environmental, and rater effects on internalizing and externalizing problem behavior in 10-year-old twins	TWIN RESEARCH 7 (2): 162-175 APR 2004	2	Open Access	Twinning and being a twin
72. Agrawal A, Jacobson KC,	Population based twin study of sex differences in depressive symptoms	TWIN RESEARCH 7 (2): 176-181 APR 2004	2		Beh Gen
73. Aslan H, Gul A, Cebeci A, et al.	The outcome of twin pregnancies complicated by single fetal death after 20 weeks of gestation	TWIN RESEARCH 7 (1): 1-4 FEB 2004	2		Obstetrics and Paediatrics
74. Bolinsky PK, Neale MC, Jacobson	Sources of individual differences in stressful life event exposure in male and female twins	TWIN RESEARCH 7 (1): 33-38 FEB 2004	2		Beh Gen
75. Gillespie NA, Kirk KM, Evans DM,	Do the genetic or environmental determinants of anxiety and depression change with age? A longitudinal study of Australian twins	TWIN RESEARCH 7 (1): 39-53 FEB 2004	2		Beh Gen

Authors	Paper	Published	Citatns	Open Access	Area
76. Agrawal A, Jacobson KC,	A twin study of personality and illicit drug use and abuse/dependence	TWIN RESEARCH 7 (1): 72-81 FEB 2004	2		Beh Gen
77. Forget-Dubois N, Perusse D,	Diagnosing Zygosity in infant twins: Physical similarity, genotyping, and chorionicity	TWIN RESEARCH 6 (6): 479-485 DEC 2003	2		Twin Research/ Stat,Genet Methodologies
78. Siewert EA, Stallings MC, Hewitt	Genetic and environmental analysis of behavioral risk factors for adolescent drug use in a community twin sample	TWIN RESEARCH 6 (6): 490-496 DEC 2003	2		Beh Gen
79. Hale L	Prevention of multiple pregnancy during ovulation induction	TWIN RESEARCH 6 (6): 540-542 DEC 2003	2		Obstetrics and Paediatrics
80. Putter H, Lebreck J, van Houwelingen	Selection strategies for linkage studies using twins	TWIN RESEARCH 6 (5): 377-382 OCT 2003	2	Open Access	Twin Research/ Stat,Genet Methodologies
81. Silander K, Axelsson T, Widen E,	Analysis of genetic variation in the GenomEUtwin project	TWIN RESEARCH 6 (5): 391-398 OCT 2003	2	Open Access	Twin Research/ Stat,Genet Methodologies
82. Odibo AO, Elkousy MH, Ural SH,	Screening for aneuploidy in twin pregnancies: Maternal age- and race-specific risk assessment between 9-14 weeks	TWIN RESEARCH 6 (4): 251-256 AUG 2003	2		Obstetrics and Paediatrics
83. Sau AK, Langford K, Elliott C,	Monoamniotic twins: What should be the optimal antenatal management?	TWIN RESEARCH 6 (4): 270-274 AUG 2003	2		Obstetrics and Paediatrics
84. Kamakura T, Ando J, Ono Y, et al.	A twin study of genetic and environmental influences on psychological traits of eating disorders in a Japanese female sample	TWIN RESEARCH 6 (4): 292-296 AUG 2003	2		Beh Gen
85. Beekman M, Heijmans BT, Martin	Two-locus linkage analysis applied to putative quantitative trait loci for lipoprotein(a) levels	TWIN RESEARCH 6 (4): 322-324 AUG 2003	2	Open Access	Genetic Epidemiology
86. Ebeling H, Porkka T,	Inter-twin relationships and mental health	TWIN RESEARCH 6 (4): 334-343 AUG 2003	2		Twinning and being a twin
87. Goldman RD, Blumrozen E,	The influence of a male twin on birthweight of its female co-twin - A population-based study	TWIN RESEARCH 6 (3): 173-176 JUN 2003	2		Obstetrics and Paediatrics
88. Loehlin JC, Jonsson EG,	The androgen receptor gene and psychological traits: Are results consistent in Sweden and Australia?	TWIN RESEARCH 6 (3): 201-208 JUN 2003	2		Beh Gen
89. Koenen KC, Lyons MJ, Goldberg	A high risk twin study of combat-related PTSD comorbidity	TWIN RESEARCH 6 (3): 218-226 JUN 2003	2		Beh Gen
90. Yokoyama Y	Comparison of child-rearing problems between mothers with multiple children who conceived after infertility treatment and mothers with multiple children who conceived	TWIN RESEARCH 6 (2): 89-96 APR 2003	2		Twinning and being a twin

Authors	Paper	Published	Citatns	Open Access	Area
91. Iliadou A, Lichtenstein P,	No linkage to obesity in candidate regions of chromosome 2 and 10 in a selected sample of Swedish twins	TWIN RESEARCH 6 (2): 162-169 APR 2003	2		Genetic Epidemiology
92. Geraghty SR, Khoury JC, Kalkwarf	Comparison of feeding among multiple birth infants	TWIN RESEARCH 7 (6): 542-547 DEC 2004	1		Obstetrics and Paediatrics
93. Fitzpatrick AL, Reed T, Goldberg J,	The association between prolonged fatigue and cardiovascular disease in World War II veteran twins	TWIN RESEARCH 7 (6): 571-577 DEC 2004	1		Genetic Epidemiology
94. Wiat A, Jepson A, Banya W, et al.	Quantitative association tests of immune responses to antigens of Mycobacterium tuberculosis: A study of twins in West Africa	TWIN RESEARCH 7 (6): 578-588 DEC 2004	1		Genetic Epidemiology
95. Romeis JC, Grant JD, Knopik VS,	The genetics of middle-age spread in middle-class males	TWIN RESEARCH 7 (6): 596-602 DEC 2004	1		Genetic Epidemiology
96. van Dommelen P, de Gunst MCM,	Genetic study of the height and weight process during infancy	TWIN RESEARCH 7 (6): 607-616 DEC 2004	1	Open Access	Genetic Epidemiology
97. Siewert EA, Stallings MC, Hewitt	Genetic influences on vulnerability to, and protective factors for, adolescent drinking	TWIN RESEARCH 7 (6): 617-625 DEC 2004	1		Beh Gen
98. Gillespie NA, Evans DE, Wright	Genetic simplex modeling of Eysenck's dimensions of personality in a sample of young Australian twins	TWIN RESEARCH 7 (6): 637-648 DEC 2004	1		Beh Gen
99. Bamforth F, Machin G	Why zygosity of multiple births is not always obvious: An examination of zygosity testing requests from twins or their parents	TWIN RESEARCH 7 (5): 406-411 OCT 2004	1		Twin Research/ Stat,Genet Methodologies
100. Apps MVB, Hughes TE,	The effect of birthweight on tooth-size variability in twins	TWIN RESEARCH 7 (5): 415-420 OCT 2004	1		Genetic Epidemiology
101. Pietilainen KH, Rissanen A,	Growth patterns in young adult monozygotic twin pairs discordant and concordant for obesity	TWIN RESEARCH 7 (5): 421-429 OCT 2004	1	Open Access	Genetic Epidemiology
102. DiLalla LF, Caraway RA	Behavioral inhibition as a function of relationship in preschool twins and siblings	TWIN RESEARCH 7 (5): 449-455 OCT 2004	1		Twinning and being a twin
103. Loehlin JC, Jonsson EG,	Gender diagnosticity and androgen receptor gene CAG repeat sequence	TWIN RESEARCH 7 (5): 456-461 OCT 2004	1		Mol Genetics
104. Ferreira MAR	Linkage analysis: Principles and methods for the analysis of human quantitative traits	TWIN RESEARCH 7 (5): 513-530 OCT 2004	1		Twin Research/ Stat,Genet Methodologies
105. Hansell NK, Dietz HP, Treloar SA,	Genetic covariation of pelvic organ and elbow mobility in twins and their sisters	TWIN RESEARCH 7 (3): 254-260 JUN 2004	1		Genetic Epidemiology

Authors	Paper	Published	Citatns	Open Access	Area
106. van der Weiden RMF	The first successful separation of conjoined twins (1689)	TWIN RESEARCH 7 (2): 125-127 APR 2004	1		Obstetrics and Paediatrics
107. Wicks J, Treloar SA, Martin	Using identity-by-descent information in affected sib pairs to increase the efficiency of genetic association studies	TWIN RESEARCH 7 (2): 211-216 APR 2004	1		Twin Research/ Stat,Genet Methodologies
108. Carlier M, Spitz E	Failure to obtain reliable retrospective determination of chorion type using parent information: Confirmation with French data	TWIN RESEARCH 7 (1): 13-15 FEB 2004	1		Twin Research/ Stat,Genet Methodologies
109. Fisher J, Stocky A	Maternal perinatal mental health and multiple births: Implications for practice	TWIN RESEARCH 6 (6): 506-513 DEC 2003	1		Obstetrics and Paediatrics
110. Roem K	Nutritional management of multiple pregnancies	TWIN RESEARCH 6 (6): 514-519 DEC 2003	1		Obstetrics and Paediatrics
111. Gaist D, Pedersen NL,	Stroke research in GenomEUtwin	TWIN RESEARCH 6 (5): 442-447 OCT 2003	1	Open Access	Genetic Epidemiology
112. Harris JR, Willemsen G, Aitlahti	Ethical issues and GenomEUtwin	TWIN RESEARCH 6 (5): 455-463 OCT 2003	1	Open Access	Twin Research/ Stat,Genet Methodologies
113. Gul A, Aslan H, Polat I, et al.	Natural history of 11 cases of twin-twin transfusion syndrome without intervention	TWIN RESEARCH 6 (4): 263-266 AUG 2003	1		Obstetrics and Paediatrics
114. Goetghebuer T, Ota MOC, Kebbeh	Delay in motor development of twins in Africa: A prospective cohort study	TWIN RESEARCH 6 (4): 279-284 AUG 2003	1		Twinning and being a twin
115. Malykh SB, Zyrianova NM,	Longitudinal genetic analysis of childhood IQ in 6-and 7-year-old Russian twins	TWIN RESEARCH 6 (4): 285-291 AUG 2003	1		Beh Gen
116. Lange AL	Coping ability at mid-life in relation to genetic and environmental influences at adolescence: A follow-up of Swedish twins from adolescence to mid-life	TWIN RESEARCH 6 (4): 344-350 AUG 2003	1		Beh Gen
117. Colletto GMDD, Segre CAM,	Multiple birth rates according to different socioeconomic levels: An analysis of four hospitals from the city of Sao Paulo, Brazil	TWIN RESEARCH 6 (3): 177-182 JUN 2003	1		Twinning and being a twin
118. Johnson MR, Milne RL, Torn-	A twin study of genetic influences on epilepsy outcome	TWIN RESEARCH 6 (2): 140-146 APR 2003	1		Genetic Epidemiology
119. Gilfillan CP, Montgomery GW,	Serum inhibin A and B concentrations during the menstrual cycle in mothers of spontaneous dizygotic twins	TWIN RESEARCH 6 (1): 27-33 FEB 2003	1		Twinning and being a twin
120. Salami KK, Brieger WR, Olutayo	Stress and coping among mothers of twins in rural Southwestern Nigeria	TWIN RESEARCH 6 (1): 55-61 FEB 2003	1		Twinning and being a twin

Authors	Paper	Published	Citatns	Open Access	Area
121. Kompanje EJO	The first successful separation of conjoined twins in 1689: Some additions and corrections	TWIN RESEARCH 7 (6): 537-541 DEC 2004	0		Obstetrics and Paediatrics
122. Montgomery GW, Zhao ZZ, Marsh	A deletion mutation in GDF9 in sisters with spontaneous DZ twins	TWIN RESEARCH 7 (6): 548-555 DEC 2004	0	Open Access	Twinning and being a twin
123. Takkinen S, Tolvanen A, Kaprio J,	The genetic and environmental effects on depressive symptoms among older female twins	TWIN RESEARCH 7 (6): 626-636 DEC 2004	0	Open Access	Beh Gen
124. Visscher PM, Benyamin B, White I	The use of linear mixed models to estimate variance components from data on twin pairs by maximum likelihood	TWIN RESEARCH 7 (6): 670-674 DEC 2004	0		Twin Research/ Stat,Genet Methodologies
125. Segal NL	Twin paternity; twin study summaries; Why twins fascinate	TWIN RESEARCH 7 (6): 675-679 DEC 2004	0		News, Views
126. [Anon]	Abstracts for the GenomEUtwin Scientific Meeting - Rome, 13-14 December, 2004	TWIN RESEARCH 7 (6): 680-689 DEC 2004	0		Abstracts
127. Fellman J, Eriksson AW	Should the statistical analyses of twinning-rate data be improved?	TWIN RESEARCH 7 (5): 398-405 OCT 2004	0		Twin Research/ Stat,Genet Methodologies
128. Foster RT, Allen SR	Differential transmission of parvovirus b19 in a twin gestation: A case report	TWIN RESEARCH 7 (5): 412-414 OCT 2004	0		Obstetrics and Paediatrics
129. Ooki S, Okazaki Y, Asaka A	Characteristics of a Japanese adult twin database of high school graduates	TWIN RESEARCH 7 (5): 430-434 OCT 2004	0		Twin Registries
130. Visscher PM	Power of the classical twin design revisited	TWIN RESEARCH 7 (5): 505-512 OCT 2004	0		Twin Research/ Stat,Genet Methodologies
131. Hamamy HA, Ajlouni HK, Ajlouni	Familial monozygotic twinning: Report of an extended multi-generation family	TWIN RESEARCH 7 (3): 219-222 JUN 2004	0		Twinning and being a twin
132. Imaizumi Y, Nonaka K	Trends in triplet stillbirth rates in Japan, 1975-1998	TWIN RESEARCH 7 (3): 233-238 JUN 2004	0		Obstetrics and Paediatrics
133. van den Berg SM, Posthuma D,	A longitudinal genetic study of vocabulary knowledge in adults	TWIN RESEARCH 7 (3): 284-291 JUN 2004	0	Open Access	Beh Gen
134. Parisi P	Twin research, and its multiple births and expressions: A short, personal voyage through its scope, history, and organization	TWIN RESEARCH 7 (4): 309-317 AUG 2004	0		Twin Research/ Stat,Genet Methodologies
135. [Anon]	Abstracts From the 11th International Congress on Twin Studies Denmark, 1-4 July 2004	TWIN RESEARCH 7 (4): 336-384 AUG 2004	0		Abstracts

Authors	Paper	Published	Citatns	Open Access	Area
136. Colletto GMDD, Segre CAM,	Influence of socioeconomic levels on birthweight of twins and singletons	TWIN RESEARCH 7 (2): 128-133 APR 2004	0		Genetic Epidemiology
137. Kestenbaum B	Identifying a cohort of US twins using social security administration records	TWIN RESEARCH 7 (2): 134-138 APR 2004	0		Twin Research/ Stat,Genet Methodologies
138. Price TS, Dale PS, Plomin R	A longitudinal genetic analysis of low verbal and nonverbal cognitive abilities in early childhood	TWIN RESEARCH 7 (2): 139-148 APR 2004	0		Beh Gen
139. Do KA, Aitken JF, Green AC, et al.	Analysis of melanoma onset: Assessing familial aggregation by using estimating equations and fitting variance components via Bayesian random effects models	TWIN RESEARCH 7 (1): 98-113 FEB 2004	0		Genetic Epidemiology
140. Hur YM	Assortative mating for personality traits, educational level, religious affiliation, height, weight, and body mass index in parents of a Korean twin sample	TWIN RESEARCH 6 (6): 467-470 DEC 2003	0		Beh Gen
141. Litton JE, Muilu J, Bjorklund A, et al.	Data modeling and data communication in GenomEUtwin	TWIN RESEARCH 6 (5): 383-390 OCT 2003	0	Open Access	Twin Research/ Stat,Genet Methodologies
142. von Dadelszen P, Kives S, Delisle MF, et al.	The association between early membrane rupture, latency, clinical chorioamnionitis, neonatal infection, and adverse perinatal outcomes in twin pregnancies complicated by preterm prelabour rupture of membranes	TWIN RESEARCH 6 (4): 257-262 AUG 2003	0		Obstetrics and Paediatrics
143. Hagihara S, Matsubara S, Kuwata	Discordant twin: Marked vascular communication between separated dichorionic diamniotic placentas	TWIN RESEARCH 6 (4): 267-269 AUG 2003	0		Obstetrics and Paediatrics
144. Riese ML, Swift HM, Barnes SL	Newborn twin outcome predicted by maternal variables: Differentiation by term and sex	TWIN RESEARCH 6 (1): 12-18 FEB 2003	0		Obstetrics and Paediatrics